

# let's get on the move again



## Heading back to school in March? We're ready when you are!

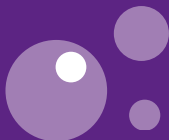
### Remember:

- You may need to travel earlier in the morning to get to school, or later in the afternoon when travelling home.



- You must wear a face covering, unless you are under 11 years old or you have an exemption.

- On a public bus, you must social distance and only sit with family members (brother or sister).



- On a dedicated school bus, you must only sit with those in your "school bubble".

- Try to keep the bus windows open where possible to allow fresh air in.



# let's get on the move again

## We've made it even easier for you to choose and catch your bus!

- **First Bus App** - Use our app to buy your ticket, plan your journey, track where your bus is and see how many seats are free. Search 'First Bus' in your app store.
- **Space Checker** - use the Space Checker tool on our website to check how busy your service is before you make your journey!



## You can find more information such as:



- How to plan your journey to school with our Journey Planner
- Timetables for your bus
- Our bus ticket prices
- How we're keeping our buses clean & safe

On our website at [www.FirstGroup.com](http://www.FirstGroup.com)

Get in touch on Twitter

@FirstManchester