

99



up to **every 20 mins** between

Lowestoft

Kessingland

Southwold

calling at

Pakefield
Wangford

Pontins
Reydon

with connections at Lowestoft
for **Great Yarmouth,**
Caister & Hemsby

bus times
from 27th May 2018



TIMES • FARES • MAPS



from **First Eastern Counties**

Welcome aboard...



99



Whether you live and work on the east coast of Norfolk & Suffolk or are enjoying a great holiday or short break, there's loads to see and do!

And what better way to get around than with Coastal Clipper!

It's simple, great value and you can sit back and relax whilst we get you to your destination.

In this guide we've included **timetables & detailed maps** of route **99** which runs on the southern part of the coast.

Going further north is easy too with a simple change to the **1 & 1A** at Lowestoft Bus Station - we've included times for these buses on the back pages.

great days out

Don't miss the ideas for places to visit all along the coast, throughout this booklet

make boarding a breeze

when you buy your ticket on our free **First mTickets** app some tickets are cheaper there too! Or, if you'd prefer, you can pay the driver with contactless* or even cash



make a day of it



unlimited travel, all day, all along the coast and on buses to & from Norwich Bus Station

travel regularly?

make big savings with a **YarLow zone** ticket go anywhere on the coast or up to Norwich Bus Station

	Week	Tenner	Month
Adult	£21	£21	£74
Young Person	£15.50	£15.50	£54
	mTicket	mTicket	mTicket

save more with our **mTickets app**

age 5 to 19?

save with a **discounted young person fare** or if you're at school, college or 6th form in the area, go online to find out about our Student Saver tickets

no cash? no problem! pay with contactless



on all our buses

#contactless due June 2018



travel together

and save with a **High5 ticket** unlimited travel, all day, for up to 5 people

£10 **YarLow Zone** all coast and to Norwich Bus Stn

£13 **Explorer** all YarLow & Norwich zones

*max two adults

why wait until it's late...

concession pass holders travel at young person single fares from 0830 to 0930 on weekdays, and free at other times





Lowestoft town centre

bus stops

● towards Southwold

● towards bus station

● change at bus station for

1 1A to Great Yarmouth

You can also catch an **X1** bus between **Gt Yarmouth, Gorleston & Lowestoft** up to **every 30 mins**



All fares, routes, frequencies & tickets in this leaflet are correct as at 27/05/18. We reserve the right to modify these during the life of this timetable. Please check our website (firstgroup.com/norfolk-suffolk) for up to date information.





LOWESTOFT

Famous for being the most easterly town and the first place to see the sunrise in the UK, this traditional seaside town's award winning Blue Flag beach is a firm favourite with families. With wide golden sands, it's perfect for swimming and paddling, building sandcastles or enjoying a stroll along the prom or through the Victorian seafront gardens.

Also one of the east coast's best places to 'do lunch', there's some great cafes & restaurants where you can enjoy delicious, homemade food overlooking the sea.



The town centre itself lies to the north of the mouth of the river Waveney and boasts a fully pedestrianised shopping area with many household names. Or head up into the historic High Street and explore The Scores trail: a series of narrow lanes created over the years by people forming paths in the cliff as they travelled between the historic High Street and the Beach Village.

Whilst in this part of town, you can enjoy a walk through the Sparrows Nest Gardens or visit the Lowestoft Maritime Museum to learn about the town's long history with the sea.

www.discoverlowestoft.co.uk

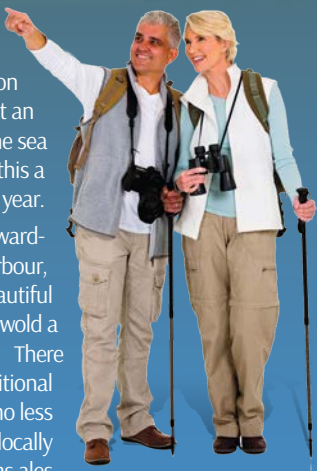




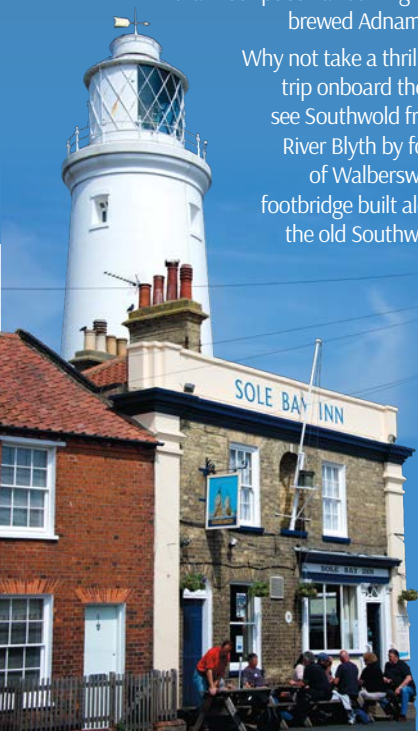
SOUTHWOLD

A charming north Suffolk seaside town on the Suffolk Heritage Coast and almost an island with just one road in and out, it is the sea and Southwold's links with it that make this a wonderful destination at any time of the year.

The working lighthouse, beach huts, award-winning pier, Adnams Brewery, busy harbour, cliff top cannon and of course the beautiful sandy beach, combine to make Southwold a quintessentially English resort town. There is a whole host of fascinating, traditional independent shops and cafes, as well as no less than four pubs - all serving locally brewed Adnams ales.



Why not take a thrilling boat trip onboard the Coastal Voyager speedboat and see Southwold from the sea, or venture across the River Blyth by foot ferry to the tiny fishing village of Walberswick, perhaps crossing back by the footbridge built along the trackbed of the old Southwold Railway.

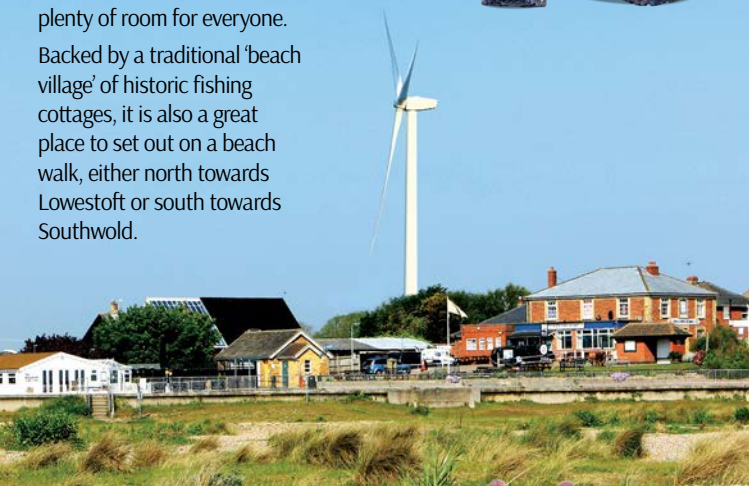


www.exploresouthwold.co.uk
www.southwoldpier.co.uk

KESSINGLAND BEACH

One of the few places on the east coast where the sea is receding, Kessingland's huge, unspoilt and growing beach is always a firm favourite with families and has plenty of room for everyone.

Backed by a traditional 'beach village' of historic fishing cottages, it is also a great place to set out on a beach walk, either north towards Lowestoft or south towards Southwold.



AFRICA ALIVE

An unforgettable day out for animal lovers,


Africa Alive is home to an amazing array of African animal species, including lions, giraffes, meerkats, hunting dogs, rhinos and many more. You can enjoy a bird's eye view of the magnificent lions from 'Lookout Lodge' and visit 'Lemur Encounters' – an eye-opening walk through the lemurs' enclosure!

Enjoy exciting feeding talks and seasonal 'Bird of Prey' displays or get on the Safari Roadtrain for an entertaining journey around the Park.

www.africa-alive.co.uk




Mondays to Saturdays (except public holidays)

Lowestoft Bus Station	0635	0710	0735	0815	0730	0750	0810	0830	0850	0910	0930	0950	1010	1030	1050	1110	1130	1150	1210
Lowestoft opp Rail Station 	0636	0711	0736	0816	0731	0751	0811	0831	0851	0911	0931	0951	1011	1031	1051	1111	1131	1151	1211
Lowestoft Claremont Pier •	0640	0715	0740	0820	0735	0755	0815	0835	0855	0915	0935	0955	1015	1035	1055	1115	1135	1155	1215
Pakefield Tramway Hotel	0645	0720	0745	0825	0740	0800	0820	0840	0900	0920	0940	1000	1020	1040	1100	1120	1140	1200	1220
Pakefield Morrisons •	0650	0725	0750	0830	0745	0805	0825	0845	0905	0925	0945	1005	1025	1045	1105	1125	1145	1205	1225
Pakefield Pontins •	0652	0727	0752	0832	0747	0807	0827	0847	0907	0927	0947	1007	1027	1047	1107	1127	1147	1207	1227
Kessingland Field Lane •	▼	0730	▼	▼	▼	0810	▼	0850	▼	0930	▼	▼	1030	▼	▼	1130	▼	▼	1230
Kessingland Wash Lane •	▼	0732	▼	▼	▼	0812	▼	0852	▼	0932	▼	▼	1032	▼	▼	1132	▼	▼	1232
Kessingland Africa Alive	0657	0735	0757	0837	0752	0815	0832	0855	0912	0935	0952	1012	1035	1052	1112	1135	1152	1212	1235
Wrentham Southwold Rd/Dyer Tce •		0740				0820		0900		0940			1040			1140			▼
Wrentham A12 Factory Shop •		▼				▼		▼		▼			▼			▼			1240
Wangford Church Street		▼				▼		▼		▼			▼			▼			1247
Reydon Boydens Stores •		▼				▼		▼		▼			▼			▼			1254
Reydon Londis •		0748				0828		0908		0948			1048			1148			▼
Southwold Kings Head		0750				0830		0910		0950			1050			1150			1300
Southwold Pier										0955			1055			1155			1305
	these journeys operate Mondays to Fridays				these journeys operate on Saturdays														

- Times at these stops are estimated

All fares, routes, frequencies & tickets in this leaflet are correct as at 27/05/18. We reserve the right to modify these during the life of this timetable. Please check our website (firstgroup.com/norfolk-suffolk) for up to date information.

Lowestoft Bus Station	1230	1250	1310	1340	1410	1440	1510	1540	1610	1640	1710	1740
Lowestoft opp Rail Station 	1231	1251	1311	1341	1411	1441	1511	1541	1611	1641	1711	1741
Lowestoft Claremont Pier •	1235	1255	1315	1345	1415	1445	1515	1545	1615	1645	1715	1745
Pakefield Tramway Hotel	1240	1300	1320	1350	1420	1450	1520	1550	1620	1650	1720	1750
Pakefield Morrisons •	1245	1305	1325	1355	1425	1455	1525	1555	1625	1655	1725	1755
Pakefield Pontins •	1247	1307	1327	1357	1427	1457	1527	1557	1627	1657	1727	1757
Kessingland Field Lane •	▼	▼	1330	▼	1430	▼	1530	▼	1630	▼	1730	▼
Kessingland Wash Lane •	▼	▼	1332	▼	1432	▼	1532	▼	1632	▼	1732	▼
Kessingland Africa Alive	1252	1312	1335	1402	1435	1502	1535	1602	1635	1702	1735	1802
Wrentham Southwold Rd/Dyer Tce •			1340		▼		1540		▼		▼	
Wrentham A12 Factory Shop •			▼		1440		▼		1640		1740	
Wangford Church Street			▼		1447		▼		1647		1747	
Reydon Boydens Stores •			▼		1454		▼		1654		1754	
Reydon Londis •			1348		▼		1548		▼		▼	
Southwold Kings Head			1350		1500		1550		1700		1800	
Southwold Pier			1355		1505		1555		1705		1805	

**Travelling
Together?**
get a **High5**

*max two adults



unlimited travel
all day - up to 5 people*

£10 **YarLow Zone**
all coast and to
Norwich Bus Strn

£13 **Explorer**
all YarLow &
Norwich zones


PAKEFIELD

A short bus journey south of Lowestoft brings you to the pretty former fishing village of Pakefield. This is home to historic pubs, a church situated on the cliff top, restaurants with sea views and cute cafes serving tea and cakes.

It's also a great place to start a pleasant walk north along the Lowestoft's Victorian promenade back to the town centre.



Sundays and public holidays

Lowestoft Bus Station	0850	0950	1050	1150	1250	1350	1450	1550	1650
Lowestoft opp Rail Station 	0851	0951	1051	1151	1251	1351	1451	1551	1651
Lowestoft Claremont Pier •	0855	0955	1055	1155	1255	1355	1455	1555	1655
Pakefield Tramway Hotel	0900	1000	1100	1200	1300	1400	1500	1600	1700
Pakefield Morrisons •	0905	1005	1105	1205	1305	1405	1505	1605	1705
Pakefield Pontins •	0907	1007	1107	1207	1307	1407	1507	1607	1707
Kessingland Field Lane •	0910	1010	1110	1210	1310	1410	1510	1610	1710
Kessingland Wash Lane •	0912	1012	1112	1212	1312	1412	1512	1612	1712
Kessingland Africa Alive	0915	1015	1115	1215	1315	1415	1515	1615	1715
Wrentham Southwold Rd/Dyer Tce •	0920	1020	1120	1220	1320	1420	1520	1620	1720
Wrentham A12 Factory Shop •	▼	▼	▼	▼	▼	▼	▼	▼	▼
Wangford Church Street	▼	▼	▼	▼	▼	▼	▼	▼	▼
Reydon Boydens Stores •	▼	▼	▼	▼	▼	▼	▼	▼	▼
Reydon Londis •	0928	1028	1128	1228	1328	1428	1528	1628	1728
Southwold Kings Head	0930	1030	1130	1230	1330	1430	1530	1630	1730
Southwold Pier	0935	1035	1135	1235	1335	1435	1535	1635	1735

these journeys operate from 27th May to 16th Sept 2018 only

• Times at these stops are estimated



don't wait...
**cheaper
 concession
 singles**
 from **0830**
 ...until it's late

pass holders pay
 young person fare
 weekdays 0830 to 0930

Mondays to Saturdays (except public holidays)

Southwold Pier**Southwold Kings Head****Reydon Londis** •**Reydon Boydens Stores** •**Wangford Church Street****Wrentham A12 layby opp stores** •**Kessingland Africa Alive****Kessingland Wash Lane** •**Kessingland Field Lane/School** •**Pakefield Pontins** •**Pakefield Morrisons** •**Pakefield opp Tramway Hotel****Lowestoft Rail Station** 🚆 •**Lowestoft Bus Station**

												1005				1115			
0715		0755				0750		0840		0920		1010				1120			
▼		▼				▼		0842		0922		▼				1122			
0720		0800				0755		▼		▼		1015				▼			
0727		0807				0802		▼		▼		1022				▼			
0734		0814				0809		0849		0929		1029				1129			
0700	0740	0800	0820	0840	0930	0755	0815	0835	0855	0915	0935	0955	1015	1035	1055	1115	1135	1155	
0703	0743	0803	0823	0843	0933	0758	0818	0838	0858	0918	0938	0958	1018	1038	1058	1118	1138	1158	
0705	0745	0805	0825	0845	0935	0800	0820	0840	0900	0920	0940	1000	1020	1040	1100	1120	1140	1200	
0708	0748	0808	0828	0848	0938	0803	0823	0843	0903	0923	0943	1003	1023	1043	1103	1123	1143	1203	
0710	0750	0810	0830	0850	0940	0805	0825	0845	0905	0925	0945	1005	1025	1045	1105	1125	1145	1205	
0715	0755	0815	0835	0855	0945	0810	0830	0850	0910	0930	0950	1010	1030	1050	1110	1130	1150	1210	
0724	0804	0824	0844	0902	0952	0817	0837	0857	0917	0937	0957	1017	1037	1057	1117	1137	1157	1217	
0730	0810	0830	0850	0908	0958	0823	0843	0903	0923	0943	1003	1023	1043	1103	1123	1143	1203	1223	
these journeys operate Mondays to Fridays						these journeys operate on Saturdays													

these journeys operate Mondays to Fridays

these journeys operate on Saturdays

- Times at these stops are estimated

speedy boarding! pay with **contactless**)))

*contactless due June 2018



Southwold Pier	1205	1315	1405	1515	1615	1715	1815								
Southwold Kings Head	1210	1320	1410	1520	1620	1720	1820								
Reydon Londis •	▼	1322	▼	1522	1622	1722	1822								
Reydon Boydens Stores •	1215	▼	1415	▼	▼	▼	▼								
Wangford Church Street	1222	▼	1422	▼	▼	▼	▼								
Wrentham A12 layby opp stores •	1229	1329	1429	1529	1629	1729	1829								
Kessingland Africa Alive	1215	1235	1255	1315	1335	1405	1435	1505	1535	1605	1635	1705	1735	1805	1835
Kessingland Wash Lane •	1218	1238	1258	1318	1338	1408	1438	1508	1538	1608	1638	1708	1738	1808	1838
Kessingland Field Lane/School •	1220	1240	1300	1320	1340	1410	1440	1510	1540	1610	1640	1710	1740	1810	1840
Pakefield Pontins •	1223	1243	1303	1323	1343	1413	1443	1513	1543	1613	1643	1713	1743	1813	1843
Pakefield Morrisons •	1225	1245	1305	1325	1345	1415	1445	1515	1545	1615	1645	1715	1745	1815	1845
Pakefield opp Tramway Hotel	1230	1250	1310	1330	1350	1420	1450	1520	1550	1620	1650	1720	1750	1820	1850
Lowestoft Rail Station 🚉 •	1237	1257	1317	1337	1357	1427	1457	1527	1557	1627	1657	1727	1757	1827	1857
Lowestoft Bus Station	1243	1303	1323	1343	1403	1433	1503	1533	1603	1633	1703	1733	1803	1833	1903

All fares, routes, frequencies & tickets in this leaflet are correct as at 27/05/18. We reserve the right to modify these during the life of this timetable. Please check our website (firstgroup.com/norfolk-suffolk) for up to date information.



PLEASUREWOOD HILLS

Located just north of Lowestoft, Pleasurewood Hills is home to Wipeout, the tallest, fastest and most extreme roller coaster in the East of England! Get soaked on Timber Falls log flume, ride the traditional carousel, climb aboard the pirate ship or simply relax and enjoy fantastic shows with The Sea Lions or Playful Parrots.

catch 1, 1A or X1 buses from Lowestoft Bus Stn - up to every 15 mins

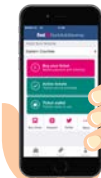


Sundays and public holidays

Southwold Pier	0950	1050	1150	1250	1350	1450	1550	1650	1750
Southwold Kings Head	0955	1055	1155	1255	1355	1455	1555	1655	1755
Reydon Londis •	0957	1057	1157	1257	1357	1457	1557	1657	1757
Reydon Boydens Stores •	▼	▼	▼	▼	▼	▼	▼	▼	▼
Wangford Church Street	▼	▼	▼	▼	▼	▼	▼	▼	▼
Wrentham A12 layby opp stores •	1004	1104	1204	1304	1404	1504	1604	1704	1804
Kessingland Africa Alive	1010	1110	1210	1310	1410	1510	1610	1710	1810
Kessingland Wash Lane •	1013	1113	1213	1313	1413	1513	1613	1713	1813
Kessingland Field Lane/School •	1015	1115	1215	1315	1415	1515	1615	1715	1815
Pakefield Pontins •	1018	1118	1218	1318	1418	1518	1618	1718	1818
Pakefield Morrisons •	1020	1120	1220	1320	1420	1520	1620	1720	1820
Pakefield opp Tramway Hotel	1025	1125	1225	1325	1425	1525	1625	1725	1825
Lowestoft Rail Station 🚉 •	1030	1130	1230	1330	1430	1530	1630	1730	1830
Lowestoft Bus Station	1035	1135	1235	1335	1435	1535	1635	1735	1835

these journeys operate from 27th May to 16th Sept 2018 only

make journeys faster
buy your ticket before you travel
with our **FREE mTicket app**



• Times at these stops are estimated

simple connections at Lowestoft Bus Station
for **Coastal Clipper 1 & 1A** buses to

HEMSBY

A short walk from Hemsby Village itself, the beach area is great for families with soft sand, dunes, amusements and traditional seaside cafes. You'll find a number of attractions including ten-pin bowling, Lost World adventure golf and MB's Funhouse indoor play area with its' slides and ball pits for when it's wet.

CAISTER ON SEA

This popular and very beautiful seaside resort is steeped in history, not least with Caister Castle that now houses a motor museum. It's a great place to enjoy some of Britain's most picturesque and family-friendly coastline, with kids playparks and refreshments along the beach front.

GORLESTON

Ideal for a lazy day on the sand with a stunning beach below glorious cliff gardens. Visitors can enjoy a large paddling pool and yacht pond, tennis courts and a trim-trail on the cliff top with views of the harbour.

GREAT YARMOUTH

A visit to Great Yarmouth is ideal for a fun-packed day out.

The town centre has a historic market with its' renowned collection of chip stalls whilst a short walk away is the Golden Mile, with its' two piers, gardens, cafes and adventure golf courses. Visit the Pleasure Beach with its' famous wooden rollercoaster, or Joyland with plenty of rides for younger children.

See sharks & penguins at the Sealife Centre, cheer at the Hippodrome Circus, explore Merrivale Model Village or go back in time at the fascinating Time & Tide Museum - a short walk from the seafront.



find **bus times**
towards these
exciting destinations
on the next page

Mondays to Fridays

except public holidays

Lowestoft Bus Station	Gt Yarmouth Market Gates	Caister on Sea Post Office	Hemsby Kingsway
0620	0705		
0650	0745	0756	0814
0650	0745	0756	0814
0730	0830	0841	0859
0800	0900	0911	0929
0845	0945	0956	1014
0915	1015	1026	1044
0945	1045	1056	1114
then at these minutes			
15	15	26	44
45	45	56	14
past each hour until			
1645	1745	1756	1814
1715	1815	1826	1844
1745	1834		
1810	1905	1915	1930
1840	1930		
1910	2000		
1940	2030		
	2100	2110	2130
2040	2130		
2140	2230		
	2300	2310	2325
2255	2345		

more buses

you can also get on an X1 bus
to travel between Lowestoft,
Gorleston & Great Yarmouth

up to every 30 mins

Mon to Sat daytime

Saturdays

Lowestoft Bus Station	Gt Yarmouth Market Gates	Caister on Sea Post Office	Hemsby Kingsway
0725	0825	0836	0854
0815	0915	0926	0944
0845	0945	0956	1014
0915	1015	1026	1044
0945	1045	1056	1114
then at these minutes			
15	15	26	44
45	45	56	14
past each hour until			
1645	1745	1756	1814
1715	1815	1826	1844
1745	1834		
1810	1905	1915	1930
1840	1930		
1910	2000		
1940	2030		
	2100	2110	2130
2040	2130		
2140	2230		
	2300	2310	2325
2255	2345		

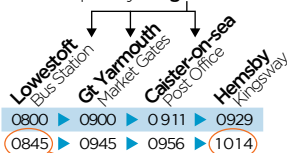
Sundays

and public holidays

Lowestoft Bus Station	Gt Yarmouth Market Gates	Caister on Sea Post Office	Hemsby Kingsway
0810	0900		
	0905	0916	0934
0910	1005	1016	1034
1010	1105	1116	1134
then at these minutes			
10	05	16	34
past each hour until			
1810	1905	1915	1930
1840	1930		
1940	2030		
	2100	2110	2130
2040	2130		
2140	2230		
	2300	2310	2325
2255	2345		

how to use this guide...

1. find the place you'll get on the bus


2. read down
the columns
to find the
times buses
leave

3. then read across
to see when you'll
arrive

Mondays to Fridays

except public holidays

Hemsby Kingsway	Caister on Sea Post Office	Gt Yarmouth Market Gates	Lowestoft Bus Station
	0602	0645	
	0637	0723	
	0707	0753	
0703	0721	0737	0823
0733	0751	0807	0855
0756	0814	0830	0920
0836	0854	0915	1003
0906	0924	0945	1033
0936	0954	1015	1103
then at these minutes			
06	24	45	33
36	54	15	03
past each hour until			
1506	1524	1545	1633
1536	1554	1615	1703
	1615	1703	
1606	1624	1645	1733
1636	1654	1715	1803
1706	1724	1745	1833
1736	1754	1815	1900
1821	1839	1850	
	1905	1950	
1854	1910	1920	
1918	1935	1945	
	2005	2050	
1954	2010	2020	
	2105	2150	
	2200	2245	
2154	2210	2220	
	2300	2345	

School
holidays
only

Saturdays

Hemsby Kingsway	Caister on Sea Post Office	Gt Yarmouth Market Gates	Lowestoft Bus Station
	0635	0718	
	0720	0803	
	0750	0833	
	0815	0903	
0811	0829	0845	0933
0836	0854	0915	1003
then at these minutes			
06	24	45	33
36	54	15	03
past each hour until			
1736	1754	1815	1900
1821	1839	1850	
	1905	1950	
1854	1910	1920	
1918	1935	1945	
	2005	2050	
1954	2010	2020	
	2105	2150	
	2200	2245	
2154	2210	2220	
	2300	2345	

Sundays

and public holidays

Hemsby Kingsway	Caister on Sea Post Office	Gt Yarmouth Market Gates	Lowestoft Bus Station
	0720	0805	
0816	0834	0855	0941
then at these minutes			
16	34	55	41
past each hour until			
1716	1734	1755	1841
1816	1834	1845	
	1900	1945	
1901	1917	1927	
	2000	2045	
1954	2010	2020	
	2100	2145	
	2200	2245	
2154	2210	2220	
	2300	2345	

make a day of it

with a **YarLow** ticket

unlimited travel, all
day, all along the
coast and on buses
to & from Norwich
Bus Station.

buy the easy way
on the mTickets app

find the full timetable online,
or pick up a separate leaflet



from **First Eastern Counties**

for more information



www.firstgroup.com/norfolk-suffolk



@FirstYarLow



First Bus Travel App

for timetables, routes & real-time info



Norwich Travel Centre

on Castle Meadow

Monday - Friday 0900-1730 Saturday 0900-1600



Traveline

www.traveline.info

0871 200 22 33

or to get in touch



Customer Services 0345 602 0121

Monday - Saturday 0700-1900 Sunday 0900-1700



firstsouthuk@firstgroup.com



First Customer Services

Davey House, 7B Castle Meadow,
Norwich NR1 3DE



Lost Property

0345 602 0121

how was your journey?



take two minutes to tell us
at **tellfirstbus.com**