

spectacular open-top bus rides around Cornwall's amazing coast



LAND'S END COASTER  
Atlantic COASTER



days of discovery, years of memories

We're delighted to be partnering with our friends at Best Days Out Cornwall. Their website - as well as a handy printed guide - is jam-packed with information, offers and competitions, many accessible on our Adventures by Bus routes.



are you up for another Adventure by bus?

you'll love the Exmoor Coaster adventuresbybus.co.uk



### Newquay

The surfing capital of Cornwall has a decidedly boho vibe, and it's fun to watch the surfers ride the waves as they come rolling in off the Atlantic. During surfing festivals, Fistral Beach becomes the centre of the world for many, but family-friendly Newquay has plenty of other attractions to occupy everyone.

Discover Newquay's evolution from fishing port to surf mecca on the town trail, browse the wide range of shops or take a boat ride out to sea,

### Blue Reef Aquarium

Get up close to a vast array of marine life at Blue Reef Aquarium.

blureefaquarium.co.uk/newquay  
01637 878134

### Newquay Zoo

Discover hundreds of animals and amazing plants, as you roam through 13 acres of beautiful, sub-tropical gardens. Get in touch with nature.

newquayzoo.org.uk  
01637 873342

Handy connections can be made with Great Western Railway trains at Newquay train times [gwr.com](http://gwr.com)



### Watergate Bay

Two miles of golden sand at low tide and enormous waves off the Atlantic have made this bay famous for surfing and kite-surfing.

The beach is a European Designated beach with the highest standard for UK bathing water.



### Porthcothan

Discover a lovely sandy beach backed by lush grassy dunes.

At low tide it opens out, connecting with small coves to the north and south. At high tide the beach is sheltered from swell and winds due to the cliffs. There are shops and toilets close by.



### Trevoze Head

The headland is rich in birdlife and wild flowers. Enjoy a wonderful walk past Trevoze Head Lighthouse and take in the spectacular views across the Cornish coast, towards The Bull and Quies rocks, and out into the Atlantic.

Start at Harlyn and finish at Porthcothan or vice versa.

### Mawgan Porth

Golden sands, rockpools and caves, backed by tempting cafés and shops makes this small resort ideal for a relaxing day on the beach.



### Atlantic COASTER

What a great way to enjoy the spectacular scenery of Cornwall's Atlantic coast, where craggy headlands shelter some of the finest beaches in England.

Take this scenic open-top bus ride to discover panoramic views over land and out to sea that will take your breath away wherever you look.

Hop on and off where you like to discover pretty villages, cliffs and secret coves. There are also great walks to enjoy and by taking the bus you don't have to retrace your steps - just hop on another bus further along.



### Padstow

Enjoy the harbour life, where boats gently rock on their moorings, children fish for crabs, and quayside inns, cafés, shops and galleries overlook the calm water. It's so easy to waste a day here!

It's also a foodie destination, so do try some of Rick Stein's fish and chips or eat in his restaurant.



Visit the National Lobster Hatchery to discover the fascinating world of lobsters and their environment. Show your bus ticket for discounted entry.

nationallobsterhatchery.co.uk  
01841 533877

money off  
20% OFF admission



With views towards Bodmin Moor, Prideaux Place on the edge of Padstow is an enchanting Elizabethan manor house with exquisite gardens open Sundays to Thursdays from 10.30 to 5pm.

prideauxplace.co.uk  
01841 532 411



Have a great adventure by bus enjoying the rugged scenery and golden beaches along Cornwall's spectacular coast on these two fabulous open-top bus rides.

Although there are many marked bus stops, along rural sections you can get on and off more or less where you like.

Bus routes will try to stop wherever it's safe - just raise your arm in good time so the driver sees you.

At some attractions you can get money off when you show your bus ticket for that day. They're shown on the other side.

money off



runs  
31 March to  
28 September

up to every hour in high season  
26 May - 1 June  
21 July - 31 August

less frequent at other times

scan for times



Land's End Coaster



Atlantic Coaster

£2 any one-way ride

full fares information online & on our app

buy tickets on the app or pay the driver

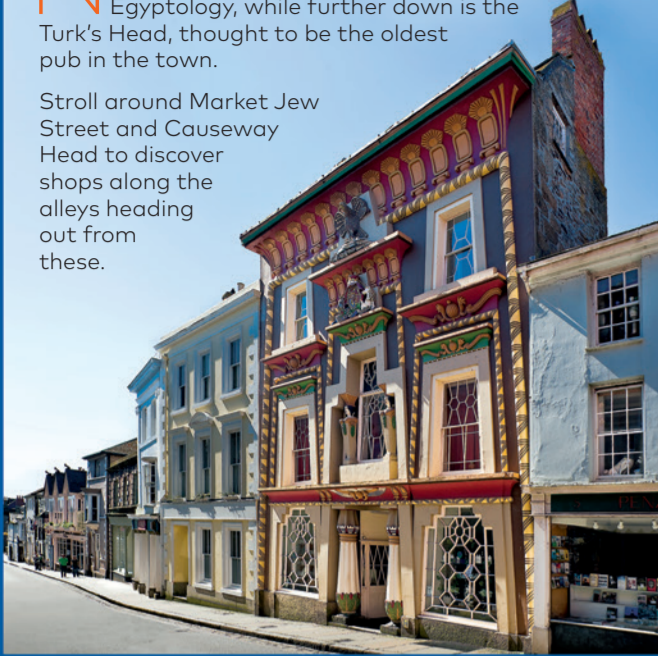
adventuresbybus.co.uk



## Penzance

Near the top of Chapel Street is the Egyptian House, built in 1836 during a national craze for Egyptology, while further down is the Turk's Head, thought to be the oldest pub in the town.

Stroll around Market Jew Street and Causeway Head to discover shops along the alleys heading out from these.



## Newlyn

Art is never far away in this part of Cornwall and these galleries showcase the very best of national and international contemporary art, as well as work by some of the best artists currently working in the region.

[newlynartgallery.co.uk](http://newlynartgallery.co.uk) 01736 363 7156



money off  
10% OFF  
food & drink

## Minack Theatre

This world famous open-air theatre, created by Rowena Cade in the 1930s, is carved into the granite cliff overlooking the spectacular panorama of Porthcurno Bay.

Theatre season is May to September, but it's a great place to visit during the day, with exotic sub-tropical gardens adding colour to the magic. And you can get a discount on food and drink when you show your bus ticket.

It's closed when matinee performances and children's storytelling performances are on - check before visiting.

[minack.com](http://minack.com) 01736 810 181

## Porthcurno

This beach is in a stunning setting (see below). There are cafés and toilets nearby and spectacular walks leading away from it.

## PK Porthcurno

Discover the Museum of Global Communications and explore the amazing story of our connected worlds. This site was the hub of international cable communications from 1870 to 1970.

During the Second World War, secret tunnels were dug to house an underground building. These bomb-proof, gas-proof tunnels provided 14 secure cables out of the UK to its allies.

Enjoy cakes freshly baked by the museum's chef, and beautifully prepared seasonal organic salads. Fish is sourced from nearby Newlyn, smoked meats from St Ives, and the Cornish clotted cream comes from the family-run Trewithen Dairy.

[pkporthcurno.com](http://pkporthcurno.com)  
01736 810 966



money off  
50% OFF  
admission



money off  
10% OFF  
admission

## Geevor Tin Mine

Mineral mining in Cornwall began 4,000 years ago, and by 1860 tin was Cornwall's most important metal export, continuing into the 20th century.

Here you can learn the story of tin mining and go underground to go back in time and discover stories about the people that worked these mines.

[geevor.com](http://geevor.com) 01736 788 662



## LAND'S END COASTER

Land's End, at the westerly tip of England is a must-see destination, and the best way to experience it is on the Land's End Coaster open-top bus ride.

Take this scenic trip to be in awe of panoramic views over craggy headlands and out to sea that are breathtaking.

Hop on and off where you like to explore more of this coast or to enjoy cliff-top walks. And, of course, by taking the bus you don't have to retrace your steps - just hop on another bus further along.

Buses mostly run both ways round the circuit, but check days and times online before you travel.

## GWR

Handy connections can be made with Great Western Railway trains at

**Penzance**  
**St Erth**  
**St Ives**

train times [gwr.com](http://gwr.com)



## Sennen Cove

Discover nice cafés and great pubs in a beautiful setting.

The Roundhouse and Capstan Gallery is a showcase for Cornish art and craft, with work by Cornish artists. It was built to house the capstan wheel which used to winch boats up and down the slip, originally part of the winding gear of a local tin mine.

[round-house.co.uk](http://round-house.co.uk) 01736 871 859

## Land's End

This is the most westerly point of England. Enjoy a coffee, lunch or delicious cream tea, or visit the craft-workers at Greeb Farm.

Gaze out to the Longships Lighthouse. Further out are the Isles of Scilly, then nothing until America. Take the 1-mile walk to Sennen Cove, with wild flowers all around and seabirds wheeling overhead.



## St Ives

Discover beautiful beaches, a pretty harbour, boat trips round the bay and a historic web of cobbled streets with charming independent shops, interesting galleries and great cafés and restaurants.

Artists have flocked to St Ives for many years and it still has a buzzing creative scene. Take a look at the famous Leach Pottery, founded in 1920, which has contemporary exhibitions, as well as pottery for sale.



With stunning views over the Atlantic Ocean, this gallery showcases works by the St Ives Modernists like Barbara Hepworth and Ben Nicholson, alongside an ever-changing programme of thought-provoking exhibitions.

[tate.org.uk](http://tate.org.uk) 01736 791 177



## St Michael's Mount

The rocky island crowned by a medieval church and castle is a spectacular sight out in Mount's Bay off Marazion, and you can walk across at low tide (at high tide there are boats to ferry you).

It's still home to the St Aubyn family and a small community in the village. Enjoy the astonishing gardens and tour the castle to discover its rich history and strange tales.

[stmichaelsmount.co.uk](http://stmichaelsmount.co.uk) 01736 887 822

